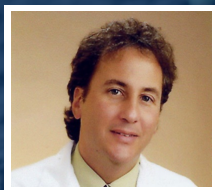


# Treating Movement Disorders



Mark Lew

Fellow , (FANA) Vice Chairman , Department of Neurology Professor of Neurology , Division of Movement Disorders

## CURRENT RESEARCH

### Advancing neurologic studies for movement disorders and comprehensive treatment approaches

Dr. Mark Lew, director of the Division of Movement Disorders at the Keck School of Medicine of USC is advancing research in new pharmacologic therapies for Parkinson's disease. For the last two decades, the Division of Movement Disorders in the department of Neurology at the Keck/USC School of Medicine has participated in clinical trials for all FDA approved medications to treat Parkinson's disease. This has allowed hundreds of Parkinson's disease (PD) patients to receive new treatments years before they were commercially available. These patients are provided lifelong care through the Center well after the end of their participation in clinical trials. This comprehensive treatment approach positively and effectively changes the patient's lives. Other clinical projects include development of novel potential biomarkers for Parkinson's disease.

- A vital component of the program's success is a comprehensive, multi-disciplinary approach to PD therapy. Every patient is evaluated to assess their individual need for therapy by speech, occupational, and physical therapists as well as clinical psychologists. Developing individualized disease-specific treatment programs for each patient is a unique approach to care that affords all patients regardless of financial capacity a successful outcome. As the World Health Organization estimates that the number of individuals with Parkinson's disease will double over the next 15 years, it is of tantamount importance that such programs are in place with a developed infrastructure to provide this high level of comprehensive care.

The Division of Movement Disorders at USC has devoted energy and resources to organize Continuing...

## AFFILIATION



University of Southern California

## EDUCATION

- in Residency Neurology in LACH 1992 ,University of Southern California
- in Fellowship Movement Disorders in LACH 1992 ,University of Southern California
- Internship Internal Medicine in School of Medicine 1988 ,George Washington University
- B.A. in Psychology 1981 ,Johns Hopkins University

## AWARDS

- Castle Connolly America Top Doctors
- HollyRod Foundation Founder
- U.S News and World Reports Top Doctors, 2013

## RESEARCH AREAS

Life Science, Neurological / Cognitive

## FUNDING REQUEST

Your contributions will support the Movement Disorder Center, allow perpetuity, world class care, and the development of new treatments for Parkinson's disease and other movement disorders. Past funding has allowed the Center to provide patients with access to new medications that may allow others afflicted with PD to reap benefits of these therapies. Your endowment would assure that the Division of Movement Disorders is able to perpetuate this important work at their current level in future years.

[Read More at benefunder.com/](http://benefunder.com/)

Copyright © 2017 / Benefunder 4790 Eastgate Mall, Ste 125, San Diego, CA 92121 / [info@benefunder.com](mailto:info@benefunder.com) / (858) 215-1136