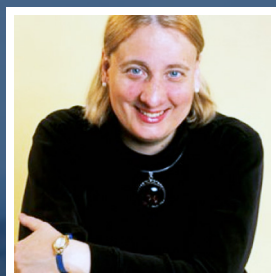


Empowering Women by Expanding Their Health Care Options



Gloria A. Bachmann

CURRENT RESEARCH

Mentoring the next generation of healthcare professionals

"I don't feel well," says a woman after delivering a baby, which the health care team may regard as a typical sign of discomfort post-labor. However, it also can translate to undetected infection [1]. In fact, a woman reporting pain after surgery is more likely to be given sedatives instead of painkillers than a man, and this stereotype towards women and pain can lead to serious physical consequences [2]. Dr. Gloria Bachmann, Interim Chair and Associate Dean for Women's Health at Rutgers Robert Wood Johnson Medical School, researches many medical issues that women face, including menopause, chronic pain, vulvodynia (chronic pain in the lower pelvic area), and vaginal health, not only to provide interventions that women can use to treat medical and sexual conditions or concerns, but also to train the next generation of healthcare providers. She also is passionate about giving women a voice in their health care. Moreover, Dr. Bachmann's research is nationally and globally renowned, ultimately encouraging further research in areas that have not been thoroughly explored before.

Author of 200 articles and chapters in the medical literature and a member of the editorial board of several medical journals, Dr. Bachmann has already made significant contributions to women's health research. With the North American Menopause Society, she helped change the nomenclature of a negative term "urogenital atrophy," now called "genitourinary syndrome of menopause," in which atrophy is used to...

[Read More at benefunder.com/](#)

AFFILIATION



Rutgers University

EDUCATION

- Residency in Ob/Gyn 1978, University of Pennsylvania
- Residency in Internal Medicine and Ob/Gyn 1975, University of Pennsylvania
- M.D. in 1974, University of Pennsylvania Medical School
- M.M.S. in 1972, Rutgers Medical School

AWARDS

- Designation of Local Legend from New Jersey, 2004
- Faculty honoree, 2005
- Celebrating America's Women Physicians-New Jersey local legend designation, 2006
- President, 2009-2010
- Leaders in Medicine Award, 2011

RESEARCH AREAS

Life Science, Diagnostics, Metabolic / Diabetes, Empowering Women

FUNDING REQUEST

Your contributions will support Dr. Gloria Bachmann at the Women's Health Institute of Rutgers University as she continues to make strides in expanding options and empowering women in healthcare. Donations will help support the \$900K-1M/year required to support operations, research, and personnel -- comprised of physicians, basic researchers and research staff. Help educate researchers and change the way women are viewed and receive healthcare; fund Dr. Bachmann's research.